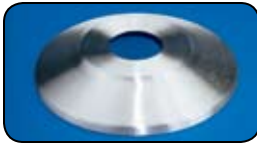
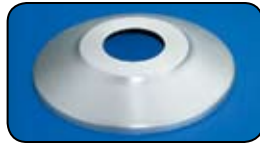


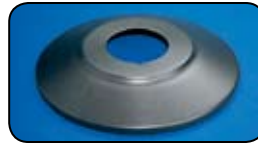
# FLAGPOLE FLASH COLLARS



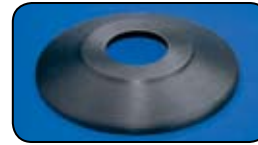
SILVER



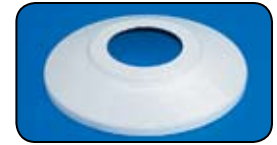
CLEAR



BRONZE



BLACK



WHITE

## STANDARD PROFILE ALUMINUM FLASH COLLARS WITH .060" WALL THICKNESS

The chart below contains the combinations most commonly requested. For other combinations please consult the factory. A split collar can be useful when replacing or adding a collar to an installed flagpole without removing the pole from the foundation sleeve. Please add \$70.00 to the pricing below for two-piece split collars.

POLE DIA.	OUTSIDE DIA.	HT.	LBS.	SILVER			CLEAR			BRONZE #313			BLACK			WHITE		
				ITEM #	1-5	6+	ITEM #	1-5	6+	ITEM #	1-5	6+	ITEM #	1-5	6+	ITEM #	1-5	6+
2"	8"	2 1/4"	.50	370000	\$20	\$18	320064	\$25	\$23	370048	\$25	\$23	370073	\$34	\$30	370098	\$25	\$23
2 3/8"	8"	2 1/4"	.45	370001	20	18	370025	25	23	370049	25	23	370074	34	30	370099	25	23
2 1/2"	8"	2 1/4"	.45	370002	20	18	320065	25	23	370050	25	23	370075	34	30	370100	25	23
2"	12"	1 3/4"	.80	370003	25	23	370026	34	30	370051	34	30	370076	38	35	370101	34	30
2 3/8"	12"	1 3/4"	.80	370004	25	23	370027	34	30	370052	34	30	370077	38	35	370102	34	30
2 1/2"	12"	1 3/4"	.80	370005	25	23	370028	34	30	370053	34	30	370078	38	35	370103	34	30
3"	12"	1 3/4"	.85	370006	25	23	370029	34	30	370054	34	30	370079	38	35	370104	34	30
3 1/2"	12"	1 3/4"	.80	370007	25	23	370030	34	30	370055	34	30	370080	38	35	370105	34	30
4"	12"	1 3/4"	.75	370008	25	23	370031	34	30	370056	34	30	370081	38	35	370106	34	30
4 3/8"	12"	1 3/4"	.75	370009	25	23	370032	34	30	370057	34	30	370082	38	35	370107	34	30
5"	12"	1 3/4"	.75	370010	25	23	370033	34	30	370058	34	30	370083	38	35	370108	34	30
5 1/2"	12"	1 3/4"	.70	370011	25	23	370034	34	30	370059	34	30	370084	38	35	370109	34	30
6"	12"	1 3/4"	.65	370012	25	23	370035	34	30	370060	34	30	370085	38	35	370110	34	30
5"	16"	2 7/8"	1.4	370633	42	38	370634	53	49	370635	53	49	370636	60	55	370637	53	49
6"	16"	2 7/8"	1.4	370013	42	38	370036	53	49	370061	53	49	370086	60	55	370111	53	49
7"	16"	2 7/8"	1.4	370014	42	38	370037	53	49	370062	53	49	370087	60	55	370112	53	49
8"	16"	2 7/8"	1.3	370015	42	38	370038	53	49	370063	53	49	370088	60	55	370113	53	49
7"	22"	3 5/8"	2.5	370016	87	78	370039	111	101	370064	111	101	370089	120	109	370114	111	101
8"	22"	3 5/8"	2.7	370017	87	78	370040	111	101	370065	111	101	370090	120	109	370115	111	101
10"	22"	3 5/8"	2.9	370018	87	78	370041	111	101	370066	111	101	370091	120	109	370116	111	101
8"	30"	4 1/4"	5.9	370019	200	180	370042	257	234	370067	257	234	370092	267	241	370117	257	234
10"	30"	4 1/4"	5.4	370020	200	180	370043	257	234	370068	257	234	370093	267	241	370118	257	234
12"	30"	4 1/4"	5.3	370021	200	180	370044	257	234	370069	257	234	370094	267	241	370119	257	234
8"	38"	4 3/4"	7.5	370022	501	446	370045	557	501	370070	557	501	370095	557	501	370120	557	501
10"	38"	4 3/4"	6.9	370023	501	446	370046	557	501	370071	557	501	370096	601	541	370121	557	501
12"	38"	4 3/4"	6.7	370024	501	446	370047	557	501	370072	557	501	370097	601	541	370122	557	501

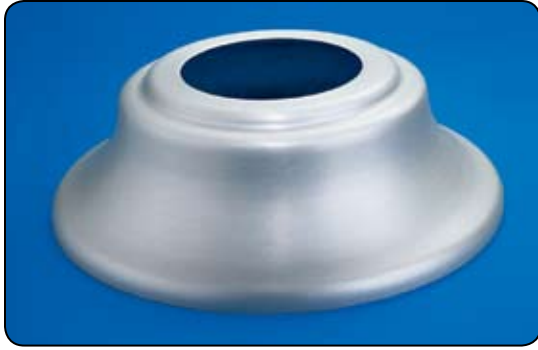
## STANDARD PROFILE ALUMINUM FLASH COLLARS WITH HEAVY-DUTY .188" WALL THICKNESS

The chart below contains the combinations most commonly requested. For other combinations please consult the factory. Heavy-Duty split collars are not available.

POLE DIA.	OUTSIDE DIA.	HT.	LBS.	SILVER			CLEAR			BRONZE #313			BLACK			WHITE		
				ITEM #	1-5	6+	ITEM #	1-5	6+	ITEM #	1-5	6+	ITEM #	1-5	6+	ITEM #	1-5	6+
2"	8"	2 1/4"	1.4	370123	\$103	\$93	370145	\$113	\$103	370167	\$113	\$103	370189	\$123	\$111	370211	\$113	\$103
2 3/8"	8"	2 1/4"	1.3	370124	103	93	370146	113	103	370168	113	103	370190	123	111	370212	113	103
2 1/2"	8"	2 1/4"	1.3	370125	103	93	370147	113	103	370169	113	103	370191	123	111	370213	113	103
2"	12"	1 3/4"	2.2	370126	129	116	370148	140	125	370170	140	125	370192	145	131	370214	140	125
2 3/8"	12"	1 3/4"	2.2	370127	129	116	370149	140	125	370171	140	125	370193	145	131	370215	140	125
2 1/2"	12"	1 3/4"	2.2	370128	129	116	370150	140	125	370172	140	125	370194	145	131	370216	140	125
3"	12"	1 3/4"	2.4	370129	129	116	370151	140	125	370173	140	125	370195	145	131	370217	140	125
3 1/2"	12"	1 3/4"	2.2	370130	129	116	370152	140	125	370174	140	125	370196	145	131	370218	140	125
4"	12"	1 3/4"	2.1	370131	129	116	370153	140	125	370175	140	125	370197	145	131	370219	140	125
4 3/8"	12"	1 3/4"	2.1	370132	129	116	370154	140	125	370176	140	125	370198	145	131	370220	140	125
5"	12"	1 3/4"	2.1	370133	129	116	370155	140	125	370177	140	125	370199	145	131	370221	140	125
5 1/2"	12"	1 3/4"	2.0	370134	129	116	370156	140	125	370178	140	125	370200	145	131	370222	140	125
6"	12"	1 3/4"	1.8	370135	129	116	370157	140	125	370179	140	125	370201	145	131	370223	140	125
6"	16"	2 7/8"	3.7	370136	178	160	370158	187	170	370180	187	170	370202	200	180	370224	187	170
7"	16"	2 7/8"	3.7	370137	178	160	370159	187	170	370181	187	170	370203	200	180	370225	187	170
8"	16"	2 7/8"	3.6	370138	178	160	370160	187	170	370182	187	170	370204	200	180	370226	187	170
7"	22"	3 5/8"	6.9	370139	401	360	370161	467	419	370183	467	419	370205	479	431	370227	467	419
8"	22"	3 5/8"	7.4	370140	401	360	370162	467	419	370184	467	419	370206	479	431	370228	467	419
10"	22"	3 5/8"	8.0	370141	401	360	370163	467	419	370185	467	419	370207	479	431	370229	467	419
8"	30"	4 1/4"	17	370142	641	610	370164	746	668	370186	746	668	370208	769	690	370230	746	668
10"	30"	4 1/4"	15	370143	641	610	370165	746	668	370187	746	668	370209	769	690	370231	746	668
12"	30"	4 1/4"	15	370144	641	610	370166	746	668	370188	746	668	370210	769	690	370232	746	668

All Flash Collars on pages 171 and 172 except split collars can be mixed to achieve the higher quantity pricing.

# FLAGPOLE FLASH COLLARS



## HIGH PROFILE 'TRUMPET' ALUMINUM FLASH COLLARS

Trumpet collars are generally used with flagpoles where a shoe base is welded to the bottom. However, these collars can be used on standard in-ground mounted flagpoles if a higher profile is desired. Supplied in a standard wall thickness of .060". The chart below contains the combinations most commonly requested. For other combinations please contact us.

POLE DIA.	OUTSIDE DIA.	HT.	LBS.	SILVER			CLEAR			BRONZE #313			BLACK			WHITE		
				ITEM #	1-5	6+	ITEM #	1-5	6+	ITEM #	1-5	6+	ITEM #	1-5	6+	ITEM #	1-5	6+
2 <sup>3</sup> / <sub>8</sub> "	10"	2 <sup>13</sup> / <sub>16</sub> "	1.5	370468	\$40	\$37	370478	\$51	\$47	370488	\$51	\$47	370498	\$56	\$51	370508	\$51	\$47
3"	10"	2 <sup>13</sup> / <sub>16</sub> "	1.5	370469	40	37	370479	51	47	370489	51	47	370499	56	51	370509	51	47
3"	16"	4 <sup>7</sup> / <sub>8</sub> "	1.5	370470	65	59	370480	81	73	370490	81	73	370500	89	81	370510	81	73
4"	16"	4 <sup>7</sup> / <sub>8</sub> "	1.8	370471	65	59	370481	81	73	370491	81	73	370501	89	81	370511	81	73
5"	16"	4 <sup>7</sup> / <sub>8</sub> "	1.7	370472	65	59	370482	81	73	370492	81	73	370502	89	81	370512	81	73
6"	16"	4 <sup>7</sup> / <sub>8</sub> "	1.7	370473	65	59	370483	81	73	370493	81	73	370503	89	81	370513	81	73
7"	16"	6 <sup>5</sup> / <sub>8</sub> "	1.6	370474	65	59	370484	81	73	370494	81	73	370504	89	81	370514	81	73
8"	16"	6 <sup>5</sup> / <sub>8</sub> "	1.6	370475	65	59	370485	81	73	370495	81	73	370505	89	81	370515	81	73
10"	22"	8"	3.3	370476	129	117	370486	149	134	370496	162	147	370506	149	134	370516	149	134
12"	26"	12 <sup>1</sup> / <sub>4</sub> "	4.9	370477	257	234	370487	289	257	370497	289	257	370507	301	267	370517	289	257



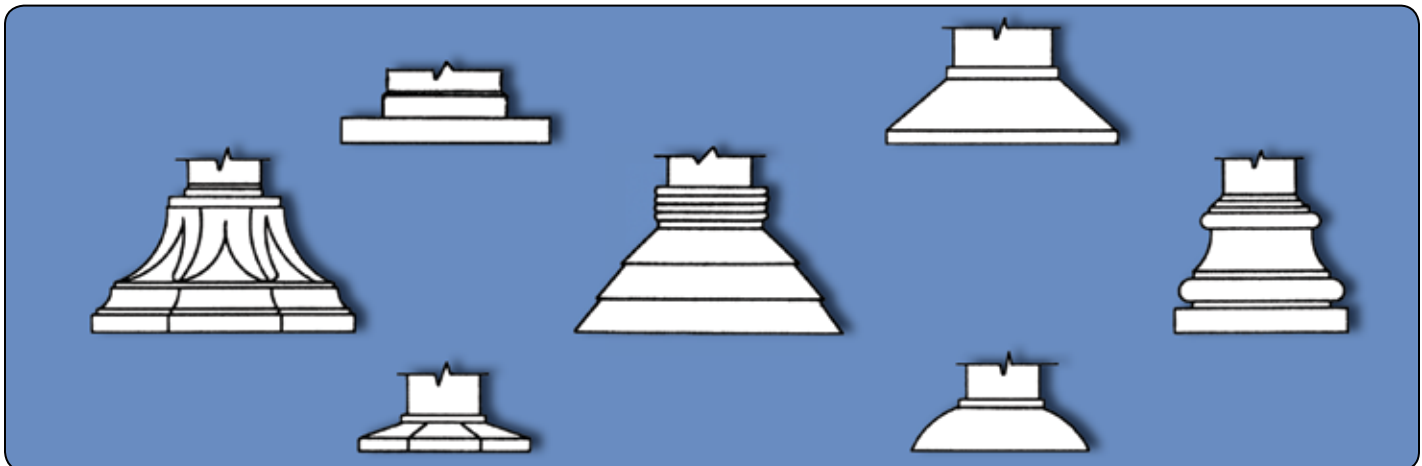
## FIBERGLASS FLASH COLLARS

The chart below contains the combinations most commonly requested. For other combinations please consult the factory. Aluminum collars are supplied for fiberglass poles with a 3", 4", or 4<sup>1</sup>/<sub>4</sub>" outside butt diameter.

POLE DIA.	OUTSIDE DIA.	HT.	LBS.	WHITE			BRONZE		
				ITEM #	1-5	6+	ITEM #	1-5	6+
6"	16"	2 <sup>1</sup> / <sub>4</sub> "	1.9	370568	\$78	\$69	370575	\$85	\$75
6 <sup>1</sup> / <sub>2</sub> "	16"	2 <sup>1</sup> / <sub>4</sub> "	1.9	370569	78	69	370576	85	75
7"	16"	2 <sup>1</sup> / <sub>4</sub> "	1.9	370570	78	69	370577	85	75
10"	23"	2 <sup>1</sup> / <sub>2</sub> "	2.8	370571	118	107	370578	129	116
10 <sup>1</sup> / <sub>2</sub> "	23"	2 <sup>1</sup> / <sub>2</sub> "	2.8	370572	118	107	370579	129	116
16 <sup>3</sup> / <sub>4</sub> "	30"	2 <sup>1</sup> / <sub>2</sub> "	2.8	370573	162	147	370580	178	160
16 <sup>3</sup> / <sub>4</sub> "	30"	2 <sup>1</sup> / <sub>2</sub> "	2.8	370574	162	147	370581	178	160

All Flash Collars on pages 171 and 172 except split collars can be mixed to achieve the higher quantity pricing.

**CALL, WRITE OR FAX FOR A PROMPT QUOTATION ON CAST, ORNAMENTAL OR CUSTOM DESIGNED FLASH COLLARS.**



All bronze colored accessories on pages 152 through 175 are supplied in a dark bronze #313 shade. If medium bronze #312, light bronze #311 or a custom color is desired please call for pricing.