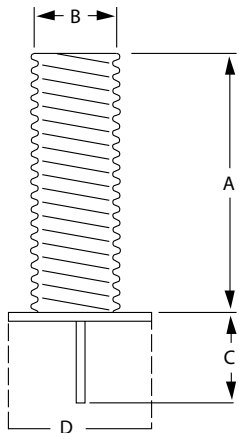


FOUNDATION SLEEVES, MOUNTING HARDWARE & LIGHTS

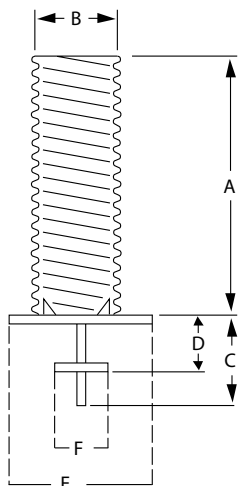
GALVANIZED STEEL FOUNDATION SLEEVES

The most common type of flagpole installation is the in-ground foundation sleeve method which calls for 1' of the flagpole to be encased in the ground sleeve for each 10' of exposed flagpole height. The diameter of the sleeve should be at least 2" greater than the outside diameter of the flagpole with the area between the flagpole and the sleeve filled with dry sand. Sleeves with a 6" diameter are supplied with a base plate and grounding spike. Sleeves with a diameter of greater than 6" are supplied with a base plate, support plate, grounding spike and, for ease of vertical alignment, steel centering wedges welded to the inside of the base plate. If you require other sizes than listed or have special on-site conditions please consult the factory.



WITH BASE PLATE & GROUND SPIKE

ITEM #	A	B	C	D	1-5	6+	LBS.
380000	2'	6"	6"	8"	\$75	\$70	20
380002	3'	6"	6"	8"	92	88	24

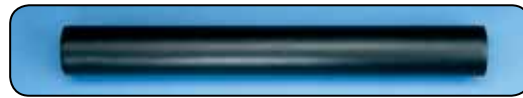


WITH BASE PLATE, SUPPORT PLATE, GROUNDING SPIKE & STEEL CENTERING WEDGES

ITEM #	A	B	C	D	E	F	1-5	6+	LBS.
380003	3'	8"	18"	6"	12"	6"	\$129	\$118	33
380004	3 1/2'	8"	18"	6"	12"	6"	129	122	40
380005	3'	10"	18"	6"	16"	8"	140	133	40
380006	3 1/2'	10"	18"	6"	16"	8"	150	143	45
380007	4'	12"	18"	6"	16"	8"	204	193	57
380008	5'	12"	18"	6"	18"	9"	238	225	65
380009	5'	15"	18"	6"	20"	10"	423	401	85
380010	6'	15"	18"	10"	20"	10"	488	466	120
380011	6'	18"	24"	10"	24"	12"	541	514	130
380012	7'	15"	24"	12"	24"	12"	541	514	140
380013	7'	18"	24"	12"	24"	12"	628	596	150
380014	8'	18"	24"	12"	24"	12"	671	639	160

PVC SLEEVES

Poles slip into form fit sleeves snugly - no voids to fill with sand. Standard sleeves require wood wedges & sand for a proper installation.



ITEM #	FOR POLE		TYPE	1-5	6+	LBS.
	DIA.	LEN.				
380015	1 3/8"	12"	FORM FIT	\$6.00	\$5.40	.14
380016	1 5/8"	15"	FORM FIT	7.10	6.40	.20
380017	1 3/4"	20"	FORM FIT	8.40	7.50	.26
380018	2"	15"	FORM FIT	10.80	9.60	.25
380020	2"	20"	FORM FIT	11.90	10.80	.34
380021	2 1/2"	30"	FORM FIT	15.80	14.80	1.1
380022	3"	20"	FORM FIT	19.30	18.30	.95
380023	3" - 3 1/2"	24"	STANDARD	17.10	16.30	1.6
380024	3" - 3 1/2"	30"	STANDARD	23.50	22.50	1.9

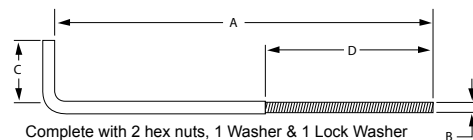
SLEEVES FOR FIBERGLASS FLAGPOLES



ITEM #	LENGTH	DIAMETER	1-5	6+	LBS.
380025	18"	6.3"	\$30	\$28	1.1
380026	24"	5"	42	39	1.4
380194	30"	6.3"	45	42	2.2
380195	30"	9.25"	89	79	4.0
380027	36"	8"	89	79	4.4
380029	48"	8"	112	100	6.2
380030	60"	14"	322	291	18
380031	72"	14"	412	370	27
380032	84"	21"	894	835	34

GALVANIZED STEEL ANCHOR BOLTS

For Shoe Base Installations



ITEM #	A	B	C	D	1-5	6+	LBS.
380037	16"	5/8"	3 1/2"	4"	\$22	\$20	2.2
380038	24"	3/4"	4"	5"	23	21	3.3
380039	36"	1"	4"	6"	30	28	8.1
380040	40"	1"	4"	6"	39	37	8.9
380041	54"	1 1/4"	6"	8"	109	99	29

COPPER CLAD LIGHTNING KIT

Each kit contains 5' long by 1/2" diameter copper clad rod, one 3' long by 1/2" diameter copper wire plus one connecting bracket.

BRACKET ONLY

ITEM #	1-5	6+	LBS.
380036	\$33	\$30	.36

5' x 1/2" ROD ONLY

ITEM #	PRICE	LBS.
380035	\$60	1.2

WIRE ONLY

ITEM #	PER FOOT	LBS.
380034	\$8.30	.36

COMPLETE SET



ITEM #	1-5	6+	LBS.
380033	\$108	\$98	4.5

FOUNDATION SLEEVES, MOUNTING HARDWARE & LIGHTS



THRU WALL BOLTS

For Mounting Outrigger & Vertical Wall Mount Brackets

Zinc plated steel complete with one acorn nut, one hex nut, two washers & two lock washers.

SIZE	LBS	SILVER			CLEAR			BRONZE #313			WHITE			BLACK		
		ITEM #	1-5	6+	ITEM #	1-5	6+	ITEM #	1-5	6+	ITEM #	1-5	6+	ITEM #	1-5	6+
5/8" x 6"	.75	380048	\$13.50	\$12.50	380060	\$13.50	\$12.50	380072	\$13.50	\$12.50	380084	\$13.50	\$12.50	380096	\$13.50	\$12.50
5/8" x 12"	1.2	380049	16.50	15.50	380061	16.50	15.50	380073	16.50	15.50	380085	16.50	15.50	380097	16.50	15.50
5/8" x 18"	1.7	380050	15.50	14.50	380062	17.50	16.50	380074	17.50	16.50	380086	17.50	16.50	380098	17.50	16.50
5/8" x 24"	2.1	380051	15.50	14.50	380063	16.50	15.50	380075	16.50	15.50	380087	16.50	15.50	380099	16.50	15.50
5/8" x 30"	2.5	380052	17.50	16.50	380064	20.00	17.50	380076	20.00	17.50	380088	20.00	17.50	380100	20.00	17.50
5/8" x 36"	2.9	380053	20.00	17.50	380065	21.00	19.00	380077	21.00	19.00	380089	21.00	19.00	380101	21.00	19.00



MOUNTING BOLTS WITH EXPANSION SHIELDS

For Mounting Outrigger & Vertical Wall Mount Brackets

Zinc plated steel complete with one acorn nut, one washer & one lock washer.

SIZE	LBS	SILVER			CLEAR			BRONZE #313			WHITE			BLACK		
		ITEM #	1-5	6+	ITEM #	1-5	6+	ITEM #	1-5	6+	ITEM #	1-5	6+	ITEM #	1-5	6+
5/8" x 6"	.81	380103	\$15.50	\$14.50	380105	\$17.50	\$16.50	380107	\$17.50	\$16.50	380109	\$17.50	\$16.50	380111	\$17.50	\$16.50



TUNNEL LIGHTS

Sold in sets only - 18" long by 6" diameter aluminum cylinders. Fixtures accept 150 watt flood lamps for up, down or up/down lighting (lamps not included in pricing below). Wiring not include in pricing below.

ADD ON FOR FACTORY SET-UP OF WIRING ON EXTERNAL HALYARD POLE - NO ACCESS DOOR \$300 w/ACCESS DOOR \$560

ADD ON FOR FACTORY SET-UP OF WIRING ON INTERNAL HALYARD POLE - NO ACCESS DOOR \$420 w/ACCESS DOOR \$690

NOTE: Access doors can only be supplied on 4" and larger diameter poles.

FOR POLE DIA.	LBS	SILVER			CLEAR			BRONZE #313			WHITE			BLACK		
		ITEM #	1-5	6+	ITEM #	1-5	6+	ITEM #	1-5	6+	ITEM #	1-5	6+	ITEM #	1-5	6+
5"	18	380112	\$950	\$860	380119	\$1,070	\$970	380126	\$1,070	\$970	380133	\$1,070	\$970	380140	\$1,070	\$970
5 1/2"	18	380113	950	860	380120	1,070	970	380127	1,070	970	380134	1,070	970	380141	1,070	970
6"	18	380114	950	860	380121	1,070	970	380128	1,070	970	380135	1,070	970	380142	1,070	970
7"	18	380115	950	860	380122	1,070	970	380129	1,070	970	380136	1,070	970	380143	1,070	970
8"	18	380116	950	860	380123	1,070	970	380130	1,070	970	380137	1,070	970	380144	1,070	970
10"	18	380117	1,070	970	380124	1,190	1,070	380131	1,190	1,070	380138	1,190	1,070	380145	1,190	1,070
12"	18	380118	1,070	970	380125	1,190	1,070	380132	1,190	1,070	380139	1,190	1,070	380146	1,190	1,070

Replacement lenses available - Item # 380190 1-5 \$123 ea. 6+ \$111 ea. Weight = .33 lbs.

LIGHTWEIGHT FLOODLIGHTS

These lights fit on any diameter pole and are supplied with a 150 watt clear tungsten halogen lamp.

ADD ON FOR FACTORY SET-UP OF WIRING ON EXTERNAL HALYARD POLE - NO ACCESS DOOR \$279 w/ACCESS DOOR \$490

ADD ON FOR FACTORY SET-UP OF WIRING ON INTERNAL HALYARD POLE - NO ACCESS DOOR \$390 w/ACCESS DOOR \$601



MODEL	ITEM #	COLOR	1-5	6+	LBS.
LWFL SIL	380192	SILVER	\$290	\$280	2.0
LWFL BR	380147	BRONZE	290	280	2.0
LWFL BL	380193	BLACK	290	280	2.0

NOTE: Access doors can only be supplied on 4" and larger diameter poles.



OBSTRUCTION (BEACON) LIGHT

This light measures 8 3/4" x 4 1/2" and is ideal for taller flagpoles near airports or flight paths. Lamp bulb is not included. Set-up of flagpole to accept this lighting fixture can be done at the factory; call for pricing. Contact us for pricing on LED version of this obstruction light.

MODEL	ITEM #	1-5	6+	LBS.
OL-R	380148	\$350	\$330	2.8